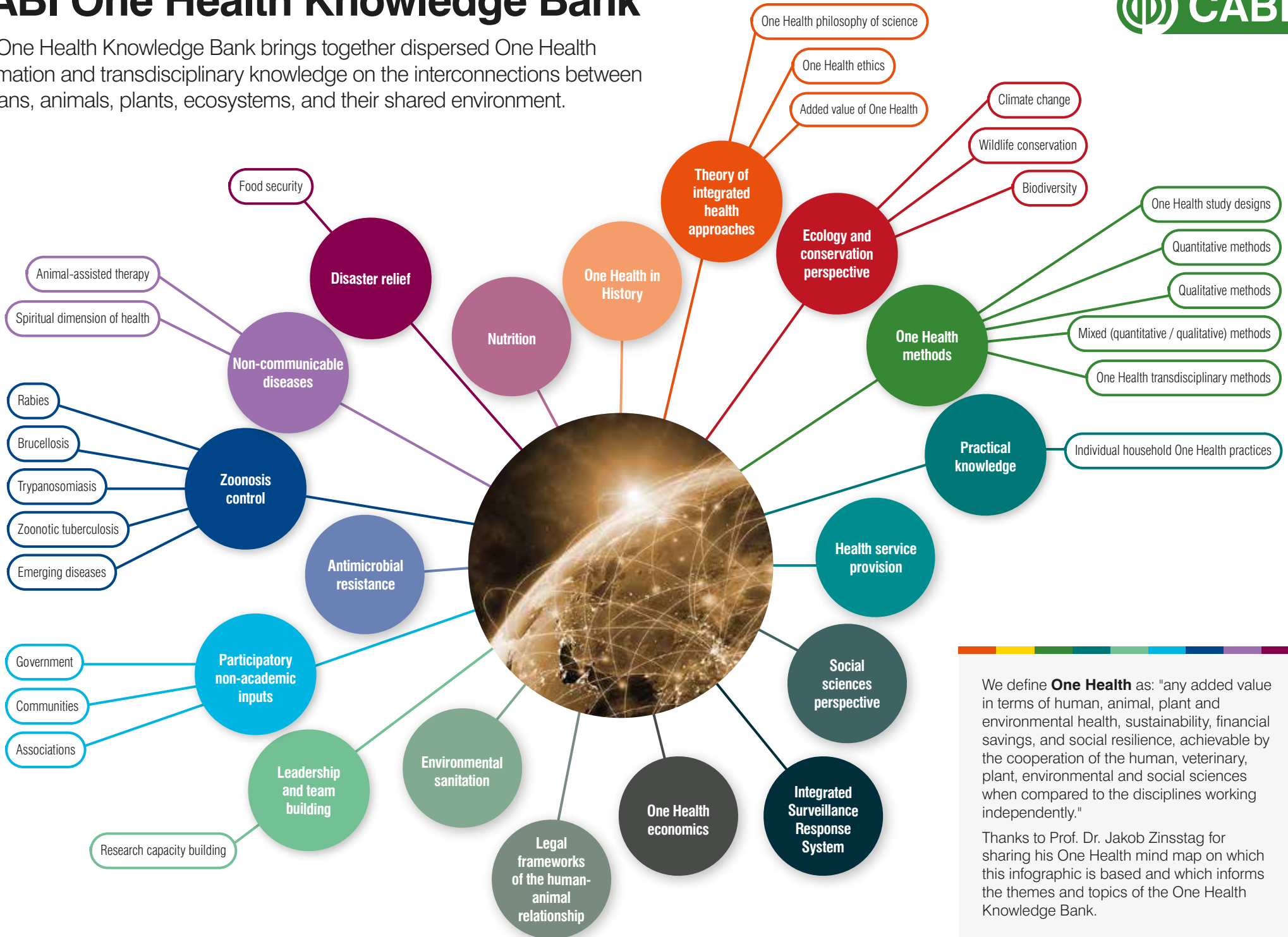


CABI One Health Knowledge Bank

The One Health Knowledge Bank brings together dispersed One Health information and transdisciplinary knowledge on the interconnections between humans, animals, plants, ecosystems, and their shared environment.



We define **One Health** as: "any added value in terms of human, animal, plant and environmental health, sustainability, financial savings, and social resilience, achievable by the cooperation of the human, veterinary, plant, environmental and social sciences when compared to the disciplines working independently."

Thanks to Prof. Dr. Jakob Zinsstag for sharing his One Health mind map on which this infographic is based and which informs the themes and topics of the One Health Knowledge Bank.